

# APPLICATION NOTE

**MF EV800**

Quick Introduction Sheet

Preliminary Specification

November 2001

Revision 1.0

---

# Quick Introduction Sheet

# MF EV800

---

## CONTENTS

1	GENERAL INFORMATION	3
1.1	Scope	3
1.2	General Description	3
1.3	System Requirements	4
1.4	Getting started	5
1.4.1	USB driver Installation	5
1.4.2	Exploring the CD	12
2	CONTENT OF THE MF EV700 PEGODA CD	13
3	GENERAL CONDITIONS	14
3.1	Usage	14
3.2	The AS IS paragraphs	14
3.3	USB Driver	14
4	COPYRIGHTS	15

---

## Quick Introduction Sheet

## MF EV800

---

### 1 GENERAL INFORMATION

#### 1.1 Scope

This document describes how to get started with the MF EV800 evaluation kit. This evaluation kit is based on the Pegoda reader, the MF RD700. The MF RD700 itself is based on the PHILIPS reader IC MF RC500. The MF RC 500 is member of a new family for highly integrated reader ICs for contactless communication at 13.56 MHz. This family is called MICORE.

The content of the MF EV700 Pegoda CDROM should help the user to design In the MF RD 700 in a specific application.

The following description covers how to set-up the needed driver to start the Pegoda reader and should give an overview about the added documents and software libraries.

Please make sure that the USB driver was developed for the Pegoda reader exclusively. Regarding information concerning to the licence requirements refer to chapter 3.

#### 1.2 General Description

The **MF EV 800 full evaluation kit** is designed to fulfil several requirements.

The Pegoda reader covers all functionality of the core component, MF RC500 reader IC, to be able to use this reader for easy PC adaptation and application development. Additionally this package might be taken as a reference design for the MF RC500 reader IC. The documentation covers all basic requirements to design in that reader IC into a user specific hardware.

This package includes

- Pegoda reader, MF RD700. This reader communicates via USB to a host PC and is ready for plug-In.
- Pegoda CD ROM containing a complete documentation set including software libraries and description as well as the demonstration program MIFAREWnd covering all MIFARE and ISO 14443A commands. Additionally all needed drivers and Acrobat Readers for Windows set-up is included.
- 5 MIFARE<sup>®</sup> Cards
- Pegoda PCB MF RM700 with USB or RS232 interface
- 5 MF RC 500 sample ICs
- card size antenna
- 50 Ohm matching circuit

Since Philips Semiconductors is mainly focused on the card and reader ICs, Philips does not produce cards. Nevertheless we have attached some sample cards of manufacturers that already incorporated MIFARE<sup>®</sup> in their standard product range.

## Quick Introduction Sheet

## MF EV800

---

### 1.3 System Requirements

To use the MF RD700 Pegoda reader in a PC environment the PC has to fulfil the following requirements.

#### Hardware:

- PC (Intel Pentium 166 MHz or
- comparable)
- minimum 32 MBytes RAM
- full USB support
- 1 available USB port
- 20 MB free hard disk space
- CD-ROM or DVD-ROM drive

#### Operating Systems:

Supported Operating systems are

- Windows98
- Windows2000

## Quick Introduction Sheet

## MF EV800

### 1.4 Getting started

After wrapping out the components, please ensure that all Windows applications are closed, the USB port is available and the supplied CD-ROM is in the drive.

#### 1.4.1 USB DRIVER INSTALLATION

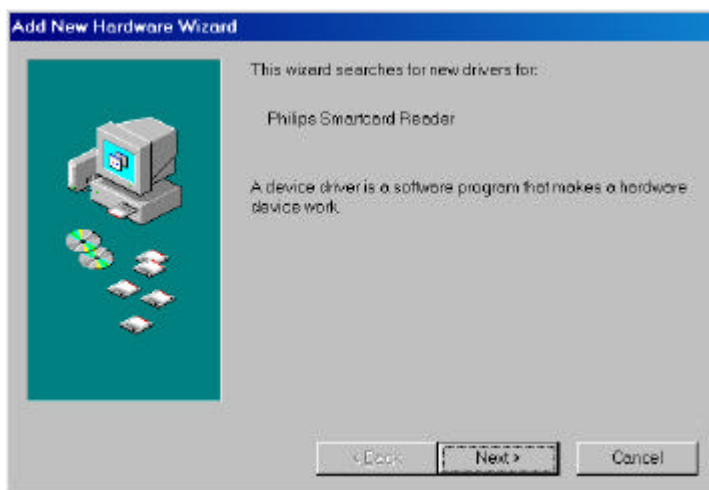
At first, connect the Reader with the supplied cable and connect afterwards the cable to your PC.

Depending on the operating system you are using, the message for the new detected hardware will appear slightly different. Therefore choose the next section corresponding to your operating system.

**NOTE:** If the software for the Philips SL EV400 ICODE Pegoda reader is already installed on your system you do not have to install the USB driver again! You can immediately follow the install instructions for the Windows demo-software MIFAREWND as described in the User Manual 'MIFAREWND, Demo software for Win32':

##### 1.4.1.1 Windows 98

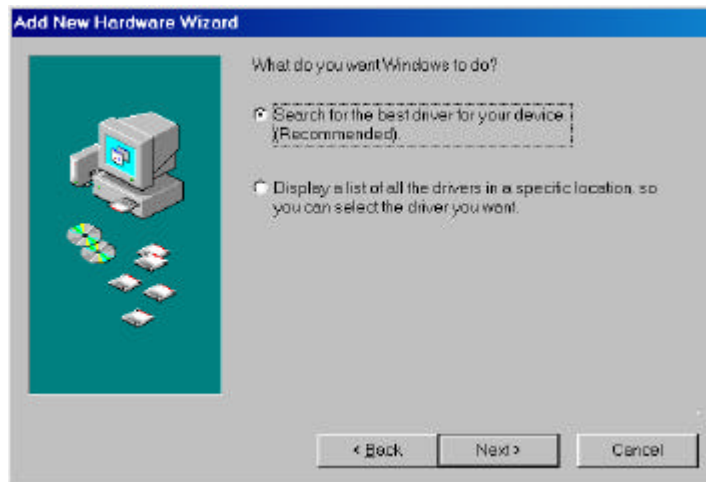
- Having connected the MIFARE<sup>®</sup> MF EV700 Pegoda to the PC using Windows 98 as operating system a message is visible that a new hardware component is detected.



- After clicking on the **Next** button you have to search for the best driver for your device and continue with the **Next** button

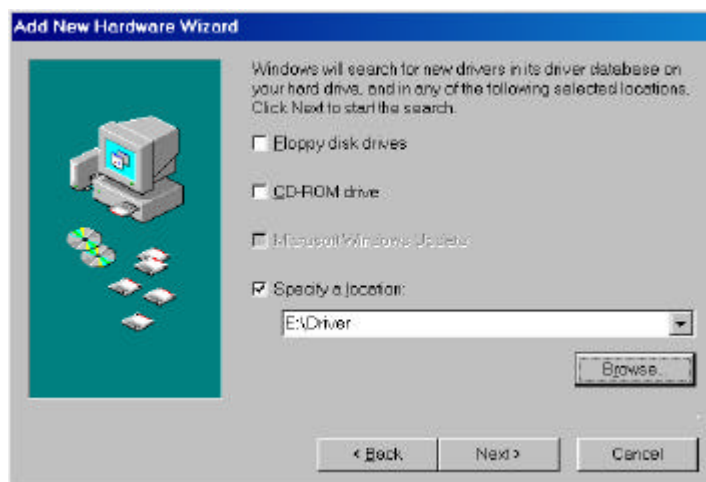
Quick Introduction Sheet

MF EV800



- Now a new driver has to be installed. You can specify the location of the driver files in the lower entry field.

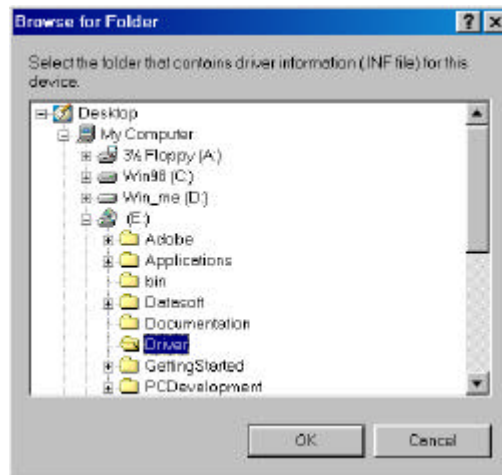
Please press the **Browse** button to specify the location of your driver file **usbio.inf** and specify the driver's location.



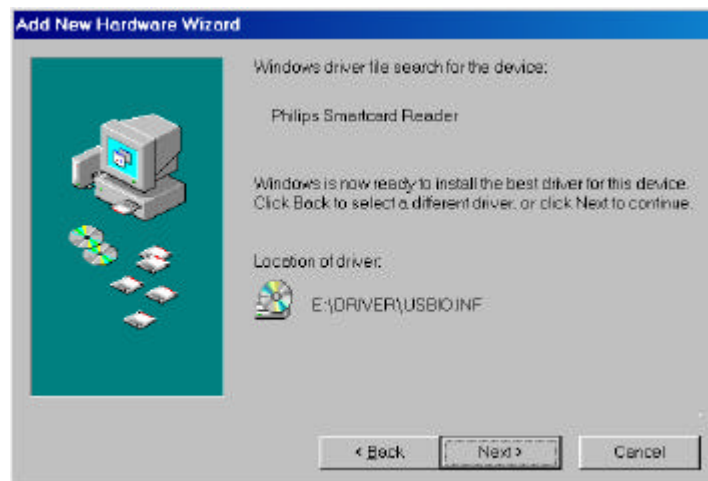
- To define the directory you have to insert the path for the USB driver or to specify the directory by using the **Browse**-Button. Please select the USB driver to finish the installation. On the delivered CD-ROM the required file is stored in the directory "Driver".

Quick Introduction Sheet

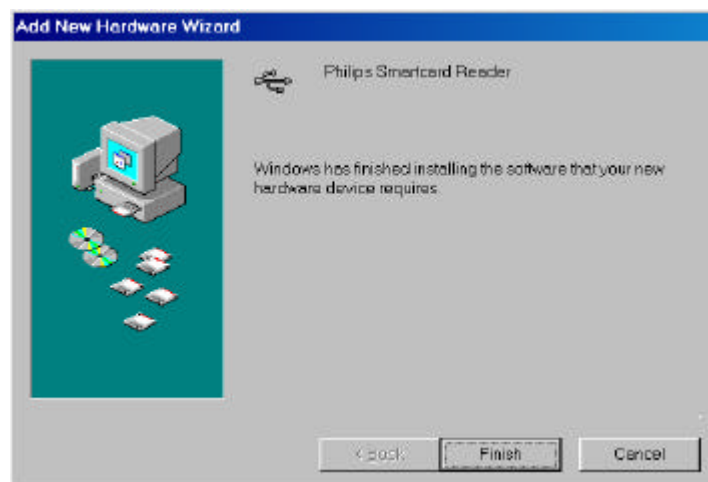
MF EV800



- After directory selection you can go on with the installation by pressing the **Next** button.



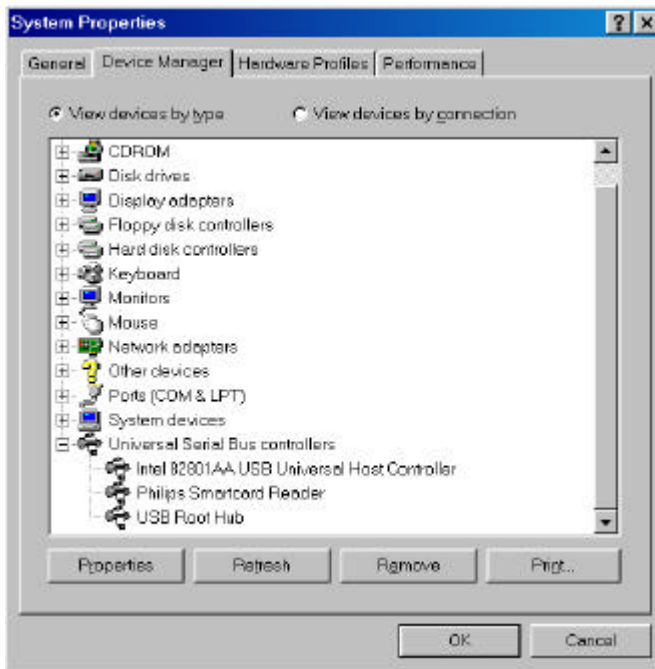
- . Installation of the USB driver has been finished. Please press **Finish**.



## Quick Introduction Sheet

## MF EV800

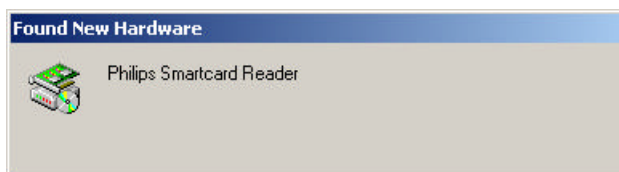
- Having successfully installed the driver you can control the installation by selecting the **System Icon** in your **Control Panel** under **System Properties**. Within the sheet Device Manager under Universal Serial Bus controller you should find **Philips Smartcard Reader**.



- Now your MIFARE Pegoda is ready for work. If you plug off your Pegoda, the entry in the USB **Serial Bus controller's** list will disappear. Having plugged in your read/write device again the logon is done automatically without further interaction of the user.

### 1.4.1.2 Windows 2000

- Having connected the MF EV700 MIFARE<sup>®</sup> Pegoda to the PC using Windows2000 as operating system a message is visible that a new hardware component is detected.

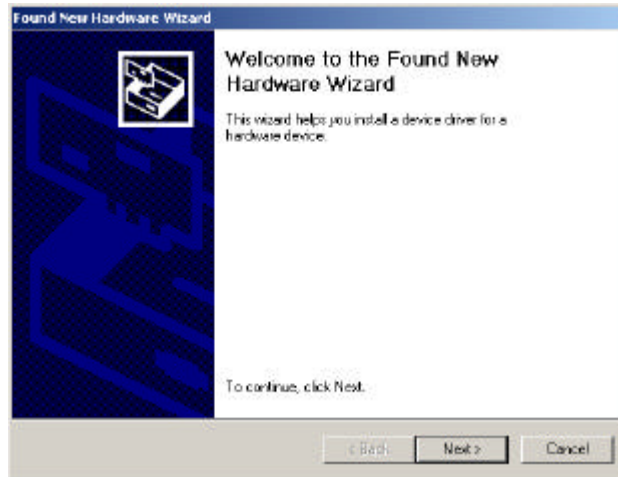


- To continue the installation of the corresponding driver for the new read/write device please press **Next**.

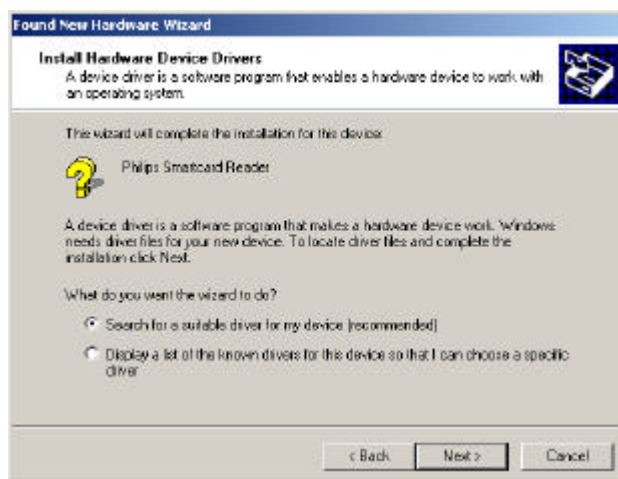


# Quick Introduction Sheet

# MF EV800



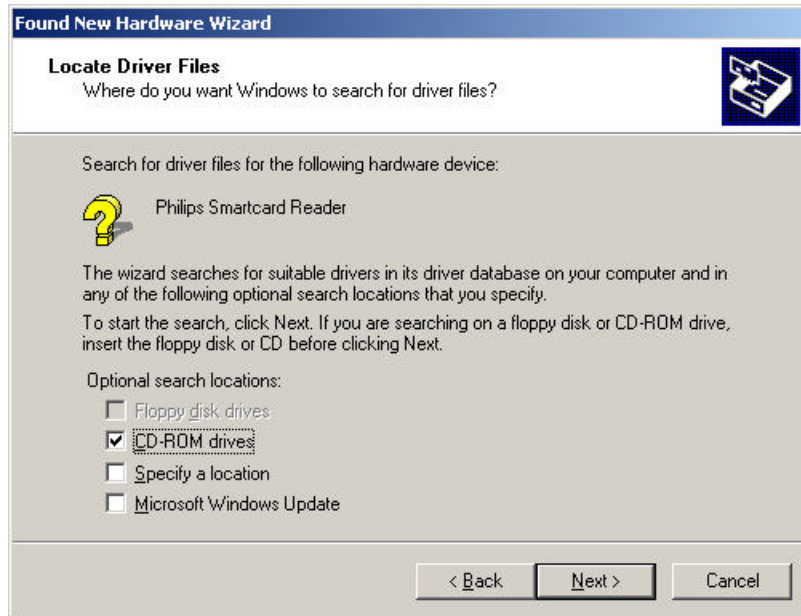
- Select the first choice 'Search for a suitable driver' - and press **Next**.



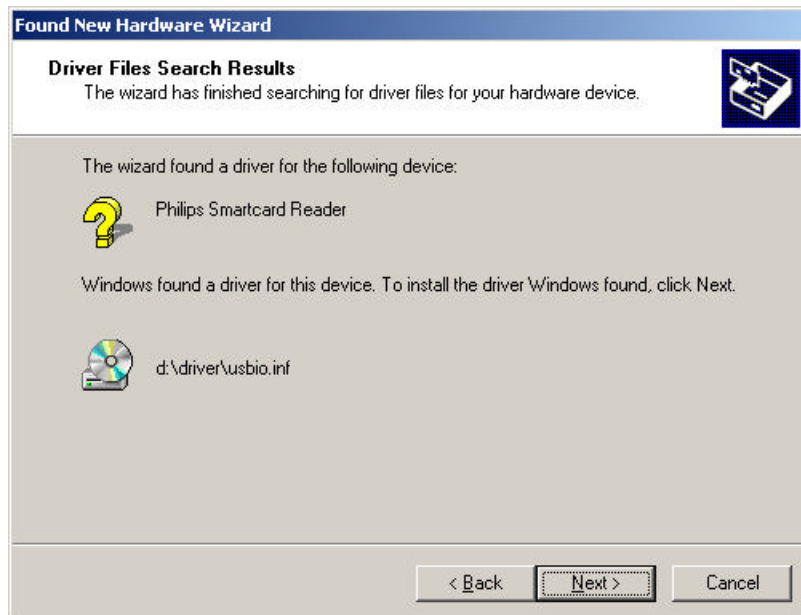
# Quick Introduction Sheet

# MF EV800

- Select your preferred installation medium (CD-ROM) and press the **Next** button. The required driver file **usbio.inf** is stored on the delivered CD within the directory "Driver".



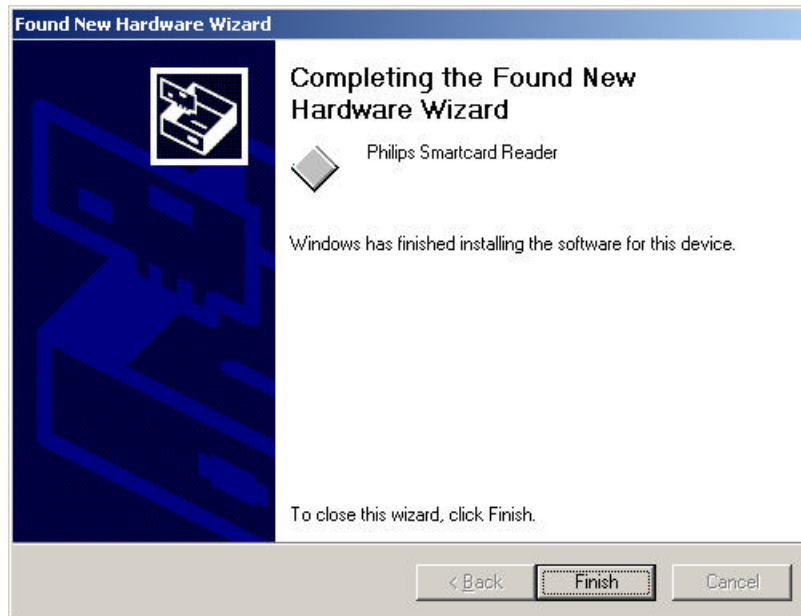
- After pressing the **Next** button the driver will be found automatically on the CD.



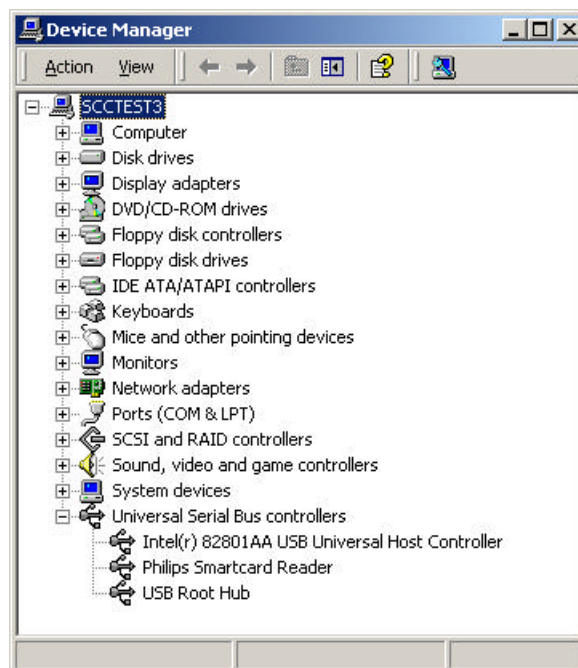
Quick Introduction Sheet

MF EV800

- Continue with the **Next** button to install the driver.



- Press the **Finish** button to finalise the installation
- To check if the driver is installed correctly open the Device Manager within **Control Panel – System – Hardware**.



- Plugging off your MF EV700 MIFARE<sup>®</sup> Pegoda, the entry in the USB **Serial Bus controller** list will disappear. After plugging in, your I•CODE Pegoda will logon automatically without further interaction of the user.

## Quick Introduction Sheet

**MF EV800**

---

### 1.4.2 EXPLORING THE CD

To view the documents on this CD-ROM, you have to install the Adobe Acrobat Reader first, found in the folder or directory called **Acrobat** at the root level of the CD.

In this directory, you can select the appropriate Adobe Acrobat Reader for your operating system. Please follow the installation instructions for the selected package.

To install the Acrobat Reader at your hard drive, double click on the single executable in the directory called **rp500enu.exe**.

Quick Introduction Sheet

**MF EV800**

**2 CONTENT OF THE MF EV700 PEGODA CD**

The content of the Pegoda CD ROM can be divided in several parts:

<b>Folder Name</b>	<b>Content, short description</b>
Adobe	Adobe Acrobat Reader
Applications	<b>MIFAREWND.exe</b> , as Windows based demonstration program to show the functionality of the reader in the communication with different cards.
PC Development	needed PC <b>libraries</b> to design an own application based on the Pegoda: <ul style="list-style-type: none"> <li><b>CommonLibs</b>: describing a common used library for error handling</li> <li><b>MFRC500</b>: DLLs and header files how to communicate to the Pegoda reader</li> <li><b>HostRDCom</b>: defines the communication using the different serial interfaces</li> <li><b>RD700</b>: Pegoda specific DLLs</li> </ul> Program sample called <b>Rges.exe</b> and the sources show to integrate the needed libraries. Rges itself continuously reads out a MIFARE® Standard card
Documentation	complete description of the libraries and the Pegoda reader itself
Driver	USB driver
Reader Development	<b>documentation</b> and <b>basic function libraries</b> for the MF RC 500 , giving the possibility to design In the MF RC 500

---

## Quick Introduction Sheet

## MF EV800

---

### 3 GENERAL CONDITIONS

#### 3.1 Usage

You may use the source codes contained on this CD for the development of free and/or commercially sold applications. You may also modify the source codes. We do not warrant that the functions contained in the source codes will meet your requirements or that the software operation will be uninterrupted or error free. The codes are only examples to show the usage of the hardware. They are not optimised in terms of speed or code size. The entire risk as to the results and performance of the codes is assumed by you.

#### 3.2 The AS IS paragraphs

Please note that Philips hereby state that this package is provided "AS IS". Philips reserves the right to make changes without notice at any time. Philips makes no warranty, expressed, implied or statutory, including but not limited to any implied warranty of merchantability or fitness for any particular purpose, or that the use will not infringe any third party patent, copyright or trademark. Philips must not be liable for any loss or damage arising from its use.

#### 3.3 USB Driver

The used USB driver was developed for the Pegoda reader by

DATASOFT ISDN Systems GmbH,  
Schillerplatz 3,  
A- 3100 St.Pölten,  
Austria.

The licensing conditions cover only the use of this driver in combination with PHILIPS Pegoda products. For customer application support regarding the USB Driver please contact DATASOFT ISDN Systems GmbH directly.

## Quick Introduction Sheet

**MF EV800**

---

### **4 COPYRIGHTS**

(C) Copyright 2001 Adobe Systems Incorporated.

All rights reserved.

Windows98 and Windows200 are trademarks of Microsoft,

## Definitions

<b>Data sheet status</b>	
Objective specification	This data sheet contains target or goal specifications for product development.
Preliminary specification	This data sheet contains preliminary data; supplementary data may be published later.
Product specification	This data sheet contains final product specifications.
<b>Limiting values</b>	
Limiting values given are in accordance with the Absolute Maximum Rating System (IEC 134). Stress above one or more of the limiting values may cause permanent damage to the device. These are stress ratings only and operation of the device at these or at any other conditions above those given in the Characteristics section of the specification is not implied. Exposure to limiting values for extended periods may affect device reliability.	
<b>Application information</b>	
Where application information is given, it is advisory and does not form part of the specification.	

## Life support applications

These products are not designed for use in life support appliances, devices, or systems where malfunction of these products can reasonably be expected to result in personal injury. Philips customers using or selling these products for use in such applications do so on their own risk and agree to fully indemnify Philips for any damages resulting from such improper use or sale.



# Philips Semiconductors - a worldwide company

**Argentina:** see South America

**Australia:** 34 Waterloo Road, NORTHRYDE, NSW 2113,  
Tel. +612 9805 4455, Fax. +612 9805 4466

**Austria:** Computerstraße 6, A-1101 WIEN, P.O.Box 213,  
Tel. +431 60 101, Fax. +431 30 101 1210

**Belarus:** Hotel Minsk Business Centre, Bld. 3, r.1211, Volodarski Str. 6,  
220050 MINSK, Tel. +375172 200 733, Fax. +375172 200 773

**Belgium:** see The Netherlands

**Brazil:** see South America

**Bulgaria:** Philips Bulgaria Ltd., Energoproject, 15th floor,  
51 James Bourchier Blvd., 1407 SOFIA  
Tel. +3592 689 211, Fax. +3592 689 102

**Canada:** Philips Semiconductors/Components,  
Tel. +1800 234 7381

**China/Hong Kong:** 501 Hong Kong Industrial Technology Centre,  
72 Tat Chee Avenue, Kowloon Tong, HONG KONG,  
Tel. +85223 19 7888, Fax. +85223 19 7700

**Colombia:** see South America

**Czech Republic:** see Austria

**Denmark:** Prags Boulevard 80, PB 1919, DK-2300 COPENHAGEN S,  
Tel. +4532 88 2636, Fax. +4531 57 1949

**Finland:** Sinikalliontie 3, FIN-02630 ESPOO,  
Tel. +3589 61 5800, Fax. +3589 61 580/xxx

**France:** 4 Rue du Port-aux-Vins, BP 317, 92156 SURESNES Cedex,  
Tel. +331 40 99 6161, Fax. +331 40 99 6427

**Germany:** Hammerbrookstraße 69, D-20097 HAMBURG,  
Tel. +4940 23 53 60, Fax. +4940 23 536 300

**Greece:** No. 15, 25th March Street, GR 17778 TAVROS/ATHENS,  
Tel. +301 4894 339/239, Fax. +301 4814 240

**Hungary:** see Austria

**India:** Philips INDIA Ltd., Shivsagar Estate, A Block, Dr. Annie Besant Rd.  
Worli, MUMBAI 400018, Tel. +9122 4938 541, Fax. +9122 4938 722

**Indonesia:** see Singapore

**Ireland:** Newstead, Clonskeagh, DUBLIN 14,  
Tel. +3531 7640 000, Fax. +3531 7640 200

**Israel:** RAPAC Electronics, 7 Kehilat Saloniki St., TEL AVIV 61180,  
Tel. +9723 645 0444, Fax. +9723 649 1007

**Italy:** Philips Semiconductors, Piazza IV Novembre 3,  
20124 MILANO, Tel. +392 6752 2531, Fax. +392 6752 2557

**Japan:** Philips Bldg. 13-37, Kohnan 2-chome, Minato-ku, TOKYO 108,  
Tel. +813 3740 5130, Fax. +813 3740 5077

**Korea:** Philips House, 260-199, Itaewon-dong, Yonsan-ku, SEOUL,  
Tel. +822 709 1412, Fax. +822 709 1415

**Malaysia:** No. 76 Jalan Universiti, 46200 PETALING JAYA, Selangor,  
Tel. +60 3750 5214, Fax. +603 757 4880

**Mexico:** 5900 Gateway East, Suite 200, EL PASO, Texas 79905,  
Tel. +9 5800 234 7381

**Middle East:** see Italy

**Netherlands:** Postbus 90050, 5600 PB EINDHOVEN, Bldg. VB,  
Tel. +3140 27 82785, Fax +3140 27 88399

**New Zealand:** 2 Wagener Place, C.P.O. Box 1041, AUCKLAND,  
Tel. +649 849 4160, Fax. +649 849 7811

**Norway:** Box 1, Manglerud 0612, OSLO,  
Tel. +4722 74 8000, Fax. +4722 74 8341

**Philippines:** Philips Semiconductors Philippines Inc.,  
106 Valero St. Salcedo Village, P.O.Box 2108 MCC, MAKATI,  
Metro MANILA, Tel. +632 816 6380, Fax. +632 817 3474

**Poland:** Ul. Lukiska 10, PL 04-123 WARSZWA,  
Tel. +4822 612 2831, Fax. +4822 612 2327

**Portugal:** see Spain

**Romania:** see Italy

**Russia:** Philips Russia, Ul. Usatcheva 35A, 119048 MOSCOW,  
Tel. +7095 247 9145, Fax. +7095 247 9144

**Singapore:** Lorong 1, Toa Payoh, SINGAPORE 1231,  
Tel. +65350 2538, Fax. +65251 6500

**Slovakia:** see Austria

**Slovenia:** see Italy

**South Africa:** S.A. Philips Pty Ltd., 195-215 Main Road Martindale,  
2092 JOHANNESBURG, P.O.Box 7430 Johannesburg 2000,  
Tel. +2711 470 5911, Fax. +2711 470 5494

**South America:** Rua do Rocio 220, 5th floor, Suite 51,  
04552-903 Sao Paulo, SAO PAULO - SP, Brazil,  
Tel. +5511 821 2333, Fax. +5511 829 1849

**Spain:** Balmes 22, 08007 BARCELONA,  
Tel. +343 301 6312, Fax. +343 301 4107

**Sweden:** Kottbygatan 7, Akalla, S-16485 STOCKHOLM,  
Tel. +468 632 2000, Fax. +468 632 2745

**Switzerland:** Allmendstraße 140, CH-8027 ZÜRICH,  
Tel. +411 488 2686, Fax. +411 481 7730

**Taiwan:** Philips Taiwan Ltd., 2330F, 66,  
Chung Hsiao West Road, Sec. 1, P.O.Box 22978,  
TAIPEI 100, Tel. +8862 382 4443, Fax. +8862 382 4444

**Thailand:** Philips Electronics (Thailand) Ltd.,  
209/2 Sanpavuth-Bangna Road Prakanong, BANGKOK 10260,  
Tel. +662 745 4090, Fax. +662 398 0793

**Turkey:** Talapasa Cad. No. 5, 80640 GÜLTEPE/ISTANBUL,  
Tel. +90212 279 2770, Fax. +90212 282 6707

**Ukraine:** Philips Ukraine, 4 Patrice Lumumba Str., Building B, Floor 7,  
252042 KIEV, Tel. +38044 264 2776, Fax. +38044 268 0461

**United Kingdom:** Philips Semiconductors Ltd., 276 Bath Road, Hayes,  
MIDDLESEX UM3 5BX, Tel. +44181 730 5000, Fax. +44181 754 8421

**United States:** 811 Argues Avenue, SUNNYVALE, CA94088-3409,  
Tel. +1800 234 7381

**Uruguay:** see South America

**Vietnam:** see Singapore

**Yugoslavia:** Philips, Trg N. Pasica 5/v, 11000 BEOGRAD,  
Tel. +38111 625 344, Fax. +38111 635 777

Published by:

Philips Semiconductors Gratkorn GmbH, Mikron-Weg 1, A-8101 Gratkorn, Austria Fax: +43 3124 299 - 270

**For all other countries apply to:** Philips Semiconductors, Marketing & Sales Communications, Internet: <http://www.semiconductors.philips.com>  
Building BE-p, P.O.Box 218, 5600 MD EINDHOVEN, The Netherlands, Fax: +3140 27 24825

© Philips Electronics N.V. 1997

SCB52

All rights are reserved. Reproduction in whole or in part is prohibited without the prior written consent of the copyright owner.

The information presented in this document does not form part of any quotation or contract, is believed to be accurate and reliable and may be changed without any notice. No liability will be accepted by the publisher for any consequence of its use. Publication thereof does not convey nor imply any license under patent- or other industrial or intellectual property rights.

**Philips  
Semiconductors**



**PHILIPS**